

Anthropomorphic Torso Phantom™

Anthropomorphic Torso Phantom™

Model ECT/TOR/P

Main Features:

- Includes large, body-shaped cylinder lung, liver and spine inserts
- Lung inserts can be filled with Styrofoam® beads and water to simulate lung tissue density
- Optional Cardiac Insert™ (Model ECT/CAR/I) may be purchased separately
- Simulates upper torso of average to large male/female patients (38 x 26 cm)
- Simulates anatomical structures and radioactivity distributions
- Optional Fillable Spine Insert available

Main Applications:

- Evaluation of cardiac ECT data acquisition and reconstruction methods
- Evaluation of non-uniform attenuation and scatter compensation methods
- Research

Specifications:

Lateral outside dimension: 38 cm

Lateral inside dimension: 36 cm

Anterior-posterior outside dimension: 26 cm

Anterior-posterior inside dimension: 24 cm

Wall thickness: 9.5 mm

Volumes:

Left lung (w/o Styrofoam® beads): ~ 0.9 liter

Right lung (w/o Styrofoam® beads): ~ 1.1 liter

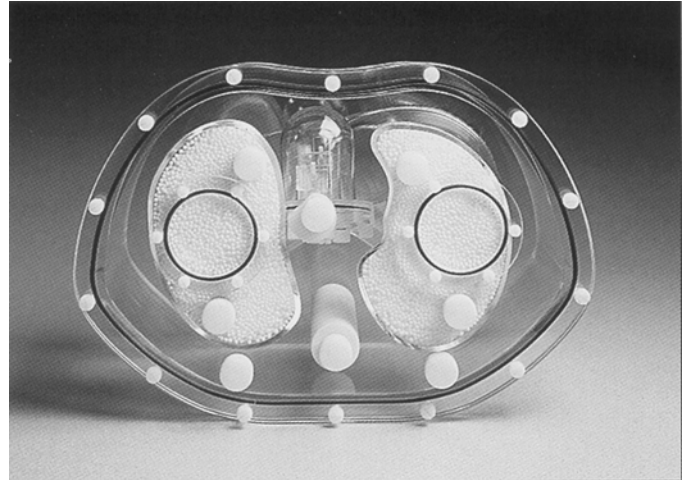
Left lung (w/ Styrofoam® beads): ~ 0.36 liter

Right lung (w/ Styrofoam® beads): ~ 0.44 liter

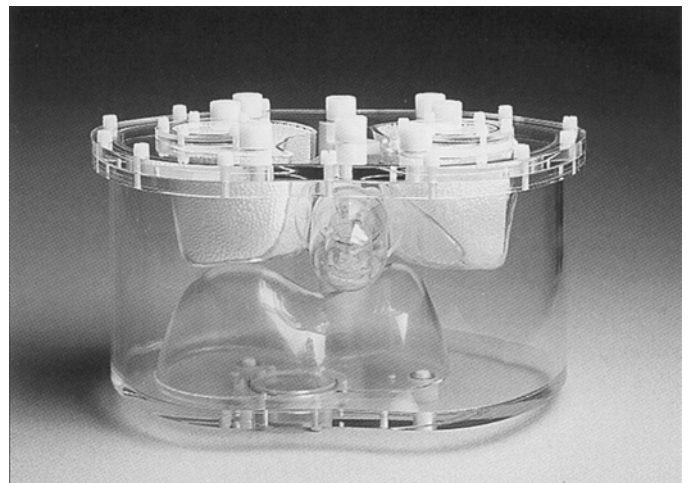
Liver: ~ 1.2 liters

Background: ~ 10.3 liters

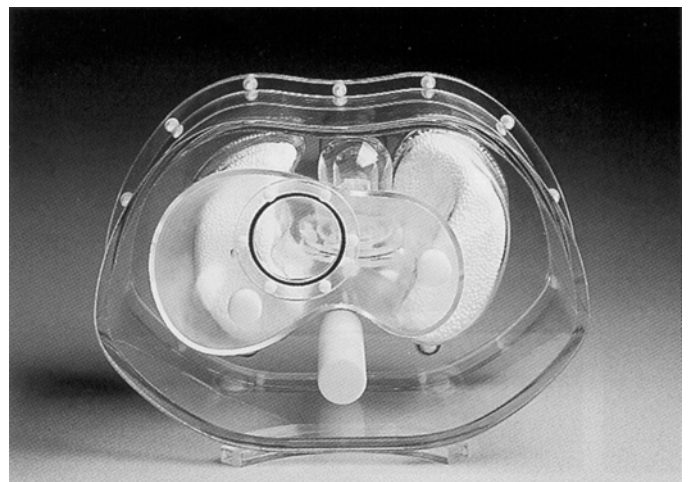
Cylinder with lung-spine insert: ~ 7.4 liter



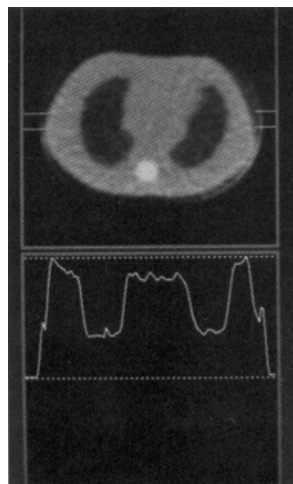
Top view - Shown with optional Cardiac Insert™



Frontal view - Shown with optional Cardiac Insert™



Bottom view - Shown with optional Cardiac Insert™



Transmission CT